

# **Krush** *Tech*

We design and build advanced compact crushers





# EcoKrush 6040

Following two years of R&D and prototype testing in a quarry, we are proud to present you our new mobile Jaw Crusher.

The EcoKrush 6040 is designed to be compact but still capable to handle good volumes, offering you the possibility to easily transport it to site, without requiring special transport or permission.

Reduce your demolition waste size, from concrete to all other mineral materials (bricks, limestones, kerb stones etc.) and save money on transport with lower volumes or reuse materials directly on site as hardcore. With the optional magnet conveyor, directly remove any ferrous material from the rubble, allowing you to add more recycling value to your operations.

This machine is also ideal as a rental for small demolition jobs, even in cities. Engine is compliant with EU stage IIIA emissions and the noise at 20m is 80dB.

Our main objectives are to build efficient, ergonomic and really sturdy machines. To this end, we designed the EcoKrush with high quality materials, from high carbon steel for the structure to heavy Hardox® plates for working areas. We also made a significant improvement to maintenance and service access by having the engine on a swivel, allowing access to both sides and internal hydraulics.

All round the EcoKrush 6040 is a very compact yet really robust jaw crusher capable of handling up to 60 tons per hour and is easy to move from site to site especially in cities. A mobile crusher that will turn your waste demolition rubble in profitable reuseable materials and help you meet your environmental goals into the future.

## GENERAL SPECIFICATIONS ECKOKRUSH 6040

JAW CRUSHER	Jaw Crusher	600 mm x 400 mm
	Jaw Adjustment	40 mm – 100 mm
	Max Feed Material Size	340 mm
	CSS Range*	40 – 100 mm
	Production Capacity**	10 – 50 m³/h (16 – 64 tons/h)
FEEDER	Vibrating Feeder Dimensions	2300 mm x 1480 mm – 1.5 m³
	Loading Height	2570 mm
	Conveyor Discharging Height	2600 mm
CONVEYOR	Conveyor Discharging Distance	5300 mm
	Conveyor Width	600 mm
GENERATOR	FG Wilson P65-6	Perkins 4 Cylinder Engine
	Apparent Power	65 kVA
	Fuel Tank Capacity	90 l
	Consumption	8 – 18 l/h
	Gross Weight	16 t

\*Close Side Settings (Minimum distance between two jaws), varies with work index (hardness) of the processing material.  
\*\*Varies with hardness and size of the processing material.

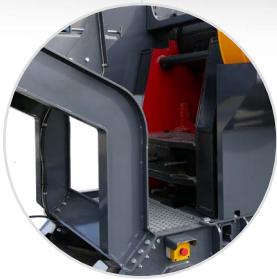
**Hardox Wear Plates**  
High resistant steel  
on work areas



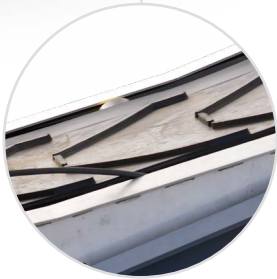
**Magnet Band Conveyor**  
Optional\*



**Pivotal Generator**  
Engine and hydraulics  
full access



**Access Points**  
Have a look inside  
the machine safely



**Chevron Belt**  
Allows more angle  
Increase your pile height

## OPTIONS AND ACCESSORIES ECKOKRUSH 6040



**Magnet Band Conveyor\***  
Remove all ferrous material from  
your rubble



**Remote Control**  
Allows you to track the machine  
at distance

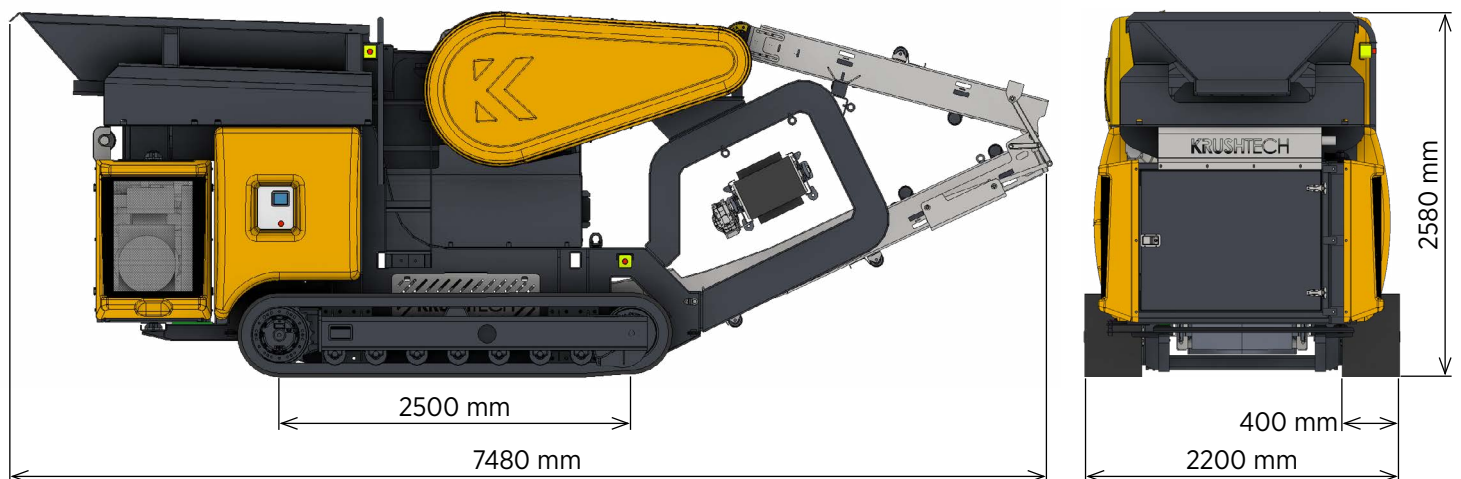
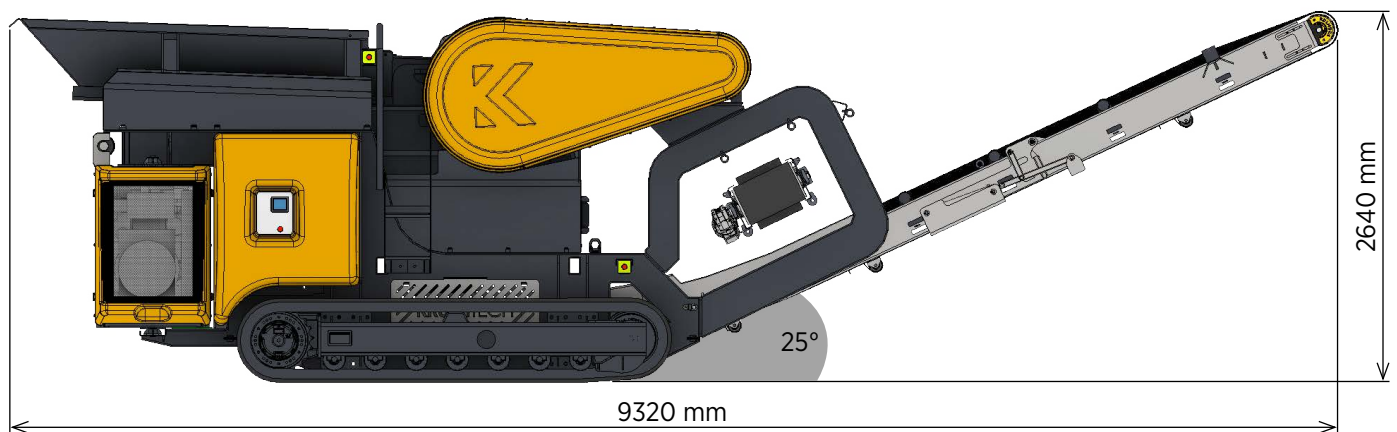


**Automatic Feeder Stop**  
Stop the vibrating feeder when  
the crusher



**Jaw Reverse Driving**  
For sticky application (asphalt...) or to unlock jammed materials

## DATASHEET — DIMENSIONS



### CONTACT US



Drop a line  
[info@krushtech.eu](mailto:info@krushtech.eu)



Call Us  
+353 93 51017



Visit Us  
Milltown Business Park  
Co. Galway  
H54 DH28  
IRELAND

**Krush** *Tech*